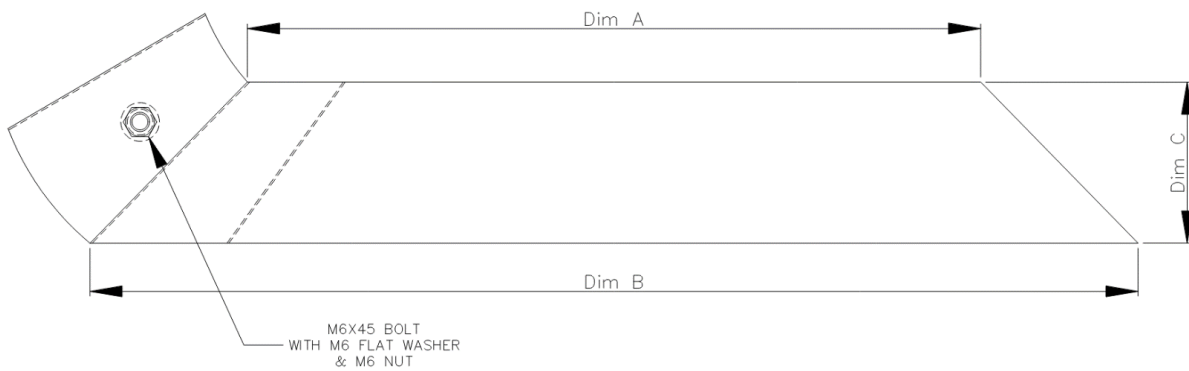
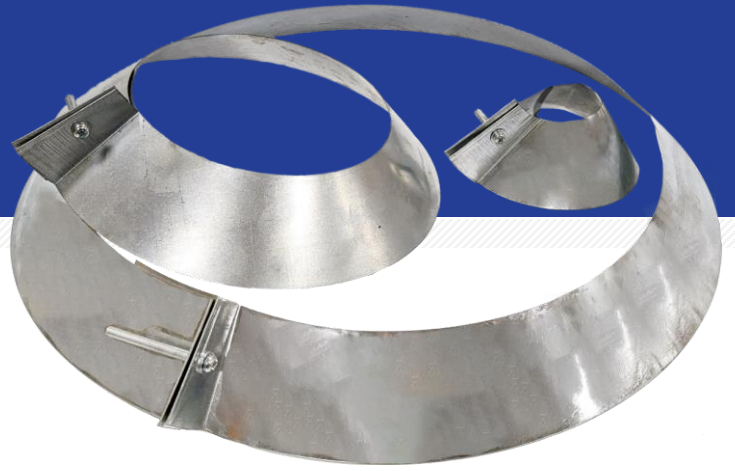


COLLARS

GALVANIZED METAL RAIN COLLARS

PRODUCT INFORMATION



FEATURES:

- Economical rain collar constructed from 25 gauge galvanized metal (26 gauge for 2" sizes)
- Features 2" of overlap for flexible adjustment across various pipe sizes
- Available in a wide range of sizes: 2", 3", 4", 5", 6", 7", 8", 9", 10", 11", 12", 14", 16", 18", 20", 22", and 24"
- Overlapping inner plate allows for adjustment of up to +1" to accommodate larger pipe diameters
- Provides space for silicone seal at the upper edge where the collar is tightened to the pipe, ensuring a secure fit
- Conveniently packaged in boxes that match the quantity of Platinum tall cones for easy integration

APPLICATION:

Rain collars are used to create a watertight seal around vent pipes or other roof penetrations. Installed above the pipe flashing, it helps prevent water from seeping through the gap between the pipe and the flashing, protecting the roof system from leaks.

OVERALL DIMENSIONS

SKU	SIZE	DIM. "A" TOP I.D.	DIM. "B" BOTTOM I.D.	DIM. "C" TOTAL HEIGHT
P-SMRC2	2"	1.97"	5.83"	1.97"
P-SMRC-3	3"	2.91"	6.79"	1.97"
P-SMRC-4	4"	4.02"	7.87"	1.97"
P-SMRC-5	5"	4.92"	8.78"	1.97"
P-SMRC-6	6"	5.91"	9.76"	1.97"
P-SMRC-7	7"	6.89"	10.90"	2.05"
P-SMRC-8	8"	7.91"	11.77"	1.97"
P-SMRC-9	9"	8.98"	12.83"	1.97"
P-SMRC-10	10"	9.96"	13.82"	1.97"
P-SMRC-11	11"	11.06"	14.92"	1.97"
P-SMRC-12	12"	11.94"	15.79"	1.97"
P-SMRC-14	14"	13.94"	17.79"	1.97"
P-SMRC-16	16"	15.94"	19.79"	1.97"
P-SMRC-18	18"	17.87"	21.73"	1.97"
P-SMRC-20	20"	18.81"	23.61"	1.97"
P-SMRC-22	22"	21.88"	26.66"	2.44"
P-SMRC-24	24"	23.88"	28.66"	2.44"

There is no equal to **PLATINUM!**

Please note that PLATINUM products may be periodically updated & are subject to change without prior notice.
For additional information, contact PLATINUM ROOFING PRODUCTS at 1-800-538-7767 or info@platinumroofingproducts.com